

# 2017 CLEAN WATER INDIANA COMPETITIVE GRANTS



## Grant Year Overview:

Total Proposals: 31  
Total Amount Requested: \$2,529,142  
Total Districts Participating: 57  
Total Match Shown: \$2,755,556

Total Proposals Funded: 16  
Total Amount Funded: \$938,651  
Total Districts Funded: 34  
Project Dates: Jan. 1, 2017-Dec. 31, 2019

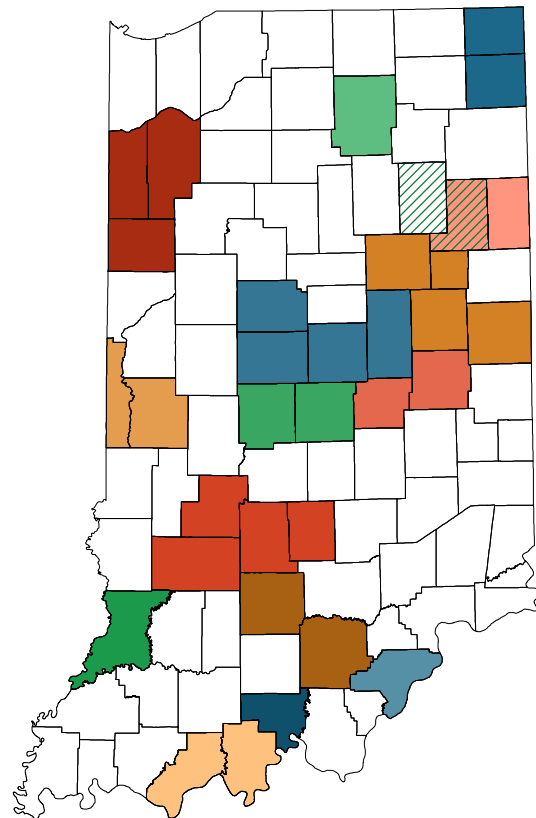


## Competitive Grants Overview:

CWI funds are being utilized by Soil and Water Conservation Districts in both rural and urban environments for locally driven programs such as cover crops, streambank stabilization, pollinator habitat, and invasive species eradication. Funded projects include cost share programs, technical staffing, educational displays, field days, and marketing and outreach programs.

Projects can be up to three years in length and districts could apply for any dollar amount that was necessary to complete the project. Funded projects ranged from \$1,200 to \$123,303.

In addition to CWI funds, each grantee is required to produce a 50% match, which can be cash or in-kind. Many SWCDs will target producers not currently served by other conservation programs.

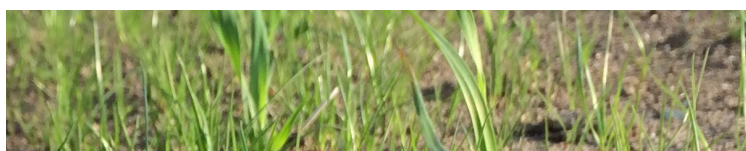


## Program Overview:

The Clean Water Indiana (CWI) Program (IC 14-32-8) was established to provide financial assistance to landowners and Soil and Water Conservation Districts (SWCDs). Through education, technical assistance, training, and cost sharing programs, the program supports the implementation of conservation practices which will reduce nonpoint sources of water pollution. CWI also provides matching funds for Indiana's Conservation Reserve Enhancement Program (CREP) and the Conservation Cropping Systems Initiative (CCSI).

## Program Administration:

The CWI fund is administered by the Indiana State Department of Agriculture Division of Soil Conservation under the direction of the State Soil Conservation Board (SSCB). The fund is derived from a portion of cigarette tax funds. (IC 6-7-1-29.3) The cigarette tax fund is 4.22 percent of total cigarette tax revenue, and the CWI fund receives one sixth of this amount. The CWI Program is responsible for providing local matching funds as well as grants for sediment and nutrient reduction projects through Indiana's SWCDs.



For more information about CWI, please visit: [in.gov/isda/2379.htm](http://in.gov/isda/2379.htm).  
For more information about the SSCB, please visit: <http://in.gov/isda/2361.htm>.  
Email questions or comments to [cleanwaterindiana@isda.in.gov](mailto:cleanwaterindiana@isda.in.gov).  
To find your local SWCD: please visit: [in.gov/isda/2370.htm](http://in.gov/isda/2370.htm).



# Clean Water Indiana



The Clean Water Indiana (CWI) Program was established to provide financial assistance to landowners and conservation groups. The financial assistance supports the implementation of conservation practices which will reduce nonpoint sources of water pollution through education, technical assistance, training, and cost sharing programs.

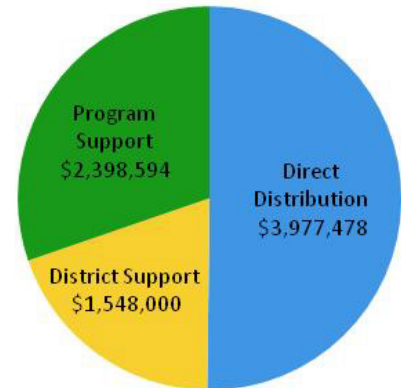
The CWI fund is administered by the Indiana State Department of Agriculture Division of Soil Conservation under the direction of the State Soil Conservation Board. The CWI Program is responsible for providing local matching funds as well as competitive grants for sediment and nutrient reduction projects through Indiana's Soil and Water Conservation Districts (SWCDs). CWI also contributes critical state matching funds for Indiana's Conservation Reserve Enhancement Program (CREP), an initiative which utilizes federal funds to encourage landowners to conserve environmentally sensitive land. CREP is locally administered by SWCDs. <http://www.in.gov/isda>

Furthermore, the CWI Program has supported the Conservation Cropping Systems Initiative which focuses on a management systems approach to crop production which results in improved soil health and water quality as well as profitability on Indiana cropland. <http://ccsin.iaswcd.org/>



The ISDA Division of Soil Conservation (DSC) administers the Clean Water Indiana fund under direction from the State Soil Conservation Board, which is intended to serve Indiana Soil and Water Conservation Districts (SWCDs). The CWI budget is derived from a portion of cigarette tax funds. (IC 6-7-1-29.3) The cigarette tax fund is 4.22 percent of total cigarette tax revenue, and the CWI fund receives one sixth of this amount. In recent years, the CWI budget has also included general fund appropriations.

## CWI Budget Overview



FY 2016 and FY 2017  
Combined CWI Budget

\*Includes \$2,000,000 general fund appropriation  
Total: \$7,924,072 before reversion

CWI funds aid SWCDs in three key ways.

### Direct Distribution to Districts:

- Competitive CWI grants provide funds for cost share programs, technical assistance and adult education for multi-district initiatives. In fiscal years 2016 and 2017, CWI awarded \$965,500 and \$938,651 in competitive grants, respectively.
- For each dollar an SWCD receives from an outside source the SSCB will provide a match up to \$10,000. (IC 14-32-8-8) In 2015, all 92 districts qualified for at least a part of this match.
- The SSCB provides training scholarships and sponsorships to districts who wish to improve upon current skill sets.

### District Support:

- Each SWCD has an assigned District Support Specialist who aids in district capacity building, including developing business plans, grant writing assistance, and sharing marketing opportunities.

### Program Support by Districts:

- Conservation Reserve Enhancement Program (CREP) funds provide incentive payments to plant native grasses, trees, or other vegetation on converted cropland.
- Conservation Cropping Systems Initiative (CCSI) utilizes science-based demonstration hubs to promote conservation practices.

Clean Water Indiana was established by statute. (IC 14-32-8)

For more information about CWI and past and present grant summaries, please see: [in.gov/isda/2379.htm](http://in.gov/isda/2379.htm).

Email questions or comments to [cleanwaterindiana@isda.in.gov](mailto:cleanwaterindiana@isda.in.gov).